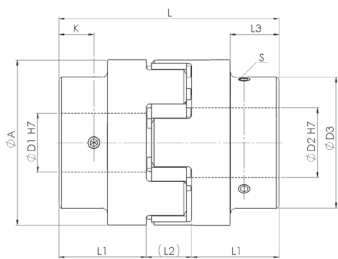
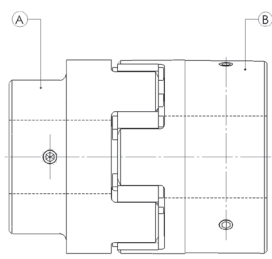


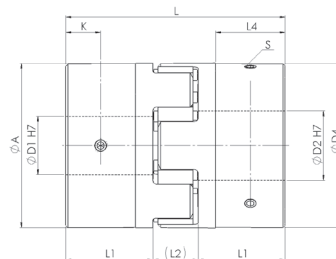
WKE-D/GJ Graugussausführung cast iron version



Version A-A



Version A-B



Version B-B

Material:
Nabe - Grauguss
Standardzahnkranz:
92 ShA
Optional Zahnkranz:
64 ShD, 98 ShA
Passfedernut ØD1 / ØD2:
Nach DIN 6885

Material:
Hub - cast iron
Standard elastomer insert:
92 ShA
Optional elastomer insert:
64 ShD, 98 ShA
Keyway ØD1 / ØD2:
Acc. to DIN 6885

| WKE-D/GJ | | | Abmessungen Dimensions | | | | | | | | | | ISO 4029 | |
|---------------|--------|--------|---------------------------|-----|-----------------------------|-----------------------------|-----|-----|-----|----|----|----|-------------|-----|
| Größe Size | TKN | | L | ØA | Nabe A / Hub A ØD1 / ØD2 | Nabe B / Hub B ØD1 / ØD2 | ØD3 | ØD4 | L1 | L2 | L3 | L4 | K | S |
| | 92 ShA | 98 ShA | | | | | | | | | | | | |
| | [Nm] | | | | | | | | | | | | | |
| 19 | 10 | 17 | 66 | 40 | 6 - 19 | 6 - 25 | 32 | 39 | 25 | 16 | 20 | 20 | 10 | M5 |
| 24 | 35 | 60 | 78 | 55 | 8 - 24 | 8 - 35 | 40 | 52 | 30 | 18 | 24 | 24 | 10 | M5 |
| 28 | 95 | 160 | 90 | 65 | 10 - 28 | 10 - 40 | 48 | 62 | 35 | 20 | 28 | 28 | 15 | M6 |
| 38 | 190 | 325 | 114 | 80 | 14 - 38 | 14 - 48 | 66 | 77 | 45 | 24 | 37 | 37 | 15 | M8 |
| 42 | 265 | 450 | 126 | 95 | 15 - 42 | 15 - 55 | 75 | 92 | 50 | 26 | 40 | 40 | 20 | M8 |
| 48 | 310 | 525 | 140 | 105 | 18 - 48 | 18 - 62 | 85 | 102 | 56 | 28 | 45 | 45 | 20 | M8 |
| 55 | 410 | 685 | 160 | 120 | 18 - 55 | 18 - 75 | 98 | 117 | 65 | 30 | 52 | 52 | 20 | M10 |
| 65 | 625 | 940 | 185 | 135 | 20 - 70 | - | 115 | - | 75 | 35 | 61 | - | 20 | M10 |
| 75 | 1280 | 1920 | 210 | 160 | 30 - 80 | - | 135 | - | 85 | 40 | 69 | - | 25 | M10 |
| 90 | 2400 | 3600 | 245 | 200 | 35 - 97 | - | 160 | - | 100 | 45 | 81 | - | 30 | M12 |
| 100 | 3300 | 4950 | 270 | 225 | 50 - 115 | - | 180 | - | 110 | 50 | 89 | - | 30 | M12 |

Weitere technische Daten, siehe Seite 37. Further technical data, see page 37.
Laufend aktualisierte Daten finden Sie auf unserer Homepage. For continuously updated data please refer to our website.

| | |
|---|---------------------------------------|
| Technische Daten TKN - Drehmoment | Technical Data TKN - Torque |
|---|---------------------------------------|

| | | | | | | | | |
|---------------------------------|----------|----|---|----|---|----|----|----|
| Bestellbeispiel / order example | WKE-D/GJ | 28 | A | 15 | B | 20 | 92 | SX |
| Modell / model | | | | | | | | |
| Größe / size | | | | | | | | |
| Nabenausführung / hub version | | | | | | | | |
| Bohrung ØD1 H7 / bore ØD1 H7 | | | | | | | | |
| Nabenausführung / hub version | | | | | | | | |
| Bohrung ØD2 H7 / bore ØD2 H7 | | | | | | | | |
| Zahnkranz / elastomer insert | | | | | | | | |
| Sonderoption / special option | | | | | | | | |

